

FLAT HOSE ON REEL

Freestanding reel made of heavy impact UV resistant plastic. Built in handle on the top for winding and a second handle on the side for ease of carrying. Easy to operate and ideal where space is limited.

DRINKING



Compact Reel 12m Hose
 Height overall incl. handle 370mm
 Diameter 300mm
 Depth 65mm **005309**

Multi Reel 18m Hose
 Height overall incl. handle 440mm
 Diameter 375mm
 Depth 80mm **005310**



WASTE MULTI REEL 9m HOSE
 25mm ID **005315**
 32mm ID **005316**

SPARE PARTS



Hose/Cord Reel Compact.
 Holds up to 25m of power lead or
 7m of flat waste hose. **005313**
 Flat Waste Hose. 7m **038685**

STOW-A-WAY HOSE CARRIER AND HANDLE



Keeps hoses neat and tangle free. The built-in "hang up hole" can be used when storing hoses. Heavy duty and adjustable to hold a variety of hose lengths. **005314**

PVC FOODGRADE HOSE



Clear per metre
 10mm **035559**
 12mm **005272**
 12.5mm **035560**
 19mm **035561**
 25mm **005274**



Black per metre
 12.5mm **005267**
 25mm **005269**

WASTE HOSE BLACK



Corrugated (Fluted) per metre
 40mm **005282**
per metre or 30m roll
 12.5mm Not reinforced **005277**
 25mm Not smooth bore **005280**
 25mm Reinforced smooth bore (20m roll) **005284**

HOT WATER PRESSURE HOSE - POLYBUTYLE



10mm to suit Qicktite fittings.
 Sold per metre or 100m rolls. **005473**

CAMEC DRINKING WATER HOSE



Non toxic. No taste. Hose will not taint the water. White 12mm
 20m roll **005301**
 10m roll **005303**
 100m roll **005304**

CLEAR BRAIDED DRINKING WATER HOSE



12mm ID. Sold per metre. **005293**

UTILUX HOSE CLAMPS



Cad Plated

10 - 16mm **005330**
 13 - 20mm Size 00 **005331**
 20 - 32mm Size 0 **005332**
 25 - 40mm Size 1 **005333**

Stainless Steel

22 - 38mm Size 1 **005329**

HOSE FIXERS



Male



Female

RV hose repair made easy. Unbreakable and reusable nylon.

Male thread **005411**
 Female thread **005412**

BRASS ADAPTOR 12mm AMERICAN



Click On 1 1/16" American thread **005399**

GARDENA HOSE USA ADAPTOR



Snap on hose fitting to suit the Shurflo In-line water entry **005398**

DM 12MM LLDPE TUBE

Sold per metre

Red 005321
Blue 005323

DM TEE CONNECTOR

12mm 005450

DM ELBOW CONNECTOR

12mm x 12mm 005451

DM STRAIGHT CONNECTOR

12mm X 12mm 005452

DM BARB CONNECTOR

15mm plastic pipe 1/2" barb 005453

DM FEMALE PLASTIC ADAPTOR

Suit 12mm 3/8" FBSP 005454
Suit 12mm 1/2" FBSP 005457

DM STRAIGHT PLASTIC ADAPTOR

Suits 12mm 1/2" MBSP 005456

DM STRAIGHT PLASTIC REDUCER

15mm x 12mm 005458

DM PLASTIC STEM ADAPTOR

12mm x 1/2" MBSP 005459

DM PLASTIC STEM ELBOW

12mm x 12mm 005460

DM ELBOW

12mm 1/2" MBSP Swivel 005461

DM BRASS ADAPTORS

Suit 12mm 1/2" MBSP 005462

DM MALE PLASTIC ADAPTOR

Suit 12mm 1/2" MBSP 005464

DM PLASTIC IN LINE CHECKING VALVE

12mm x 12mm 005465

DM LOCKING CLIP

12mm red. For hot water. 005467

DM TUBE SUPPORT INSERT

Suits 12mm 005466

PLASTIC TUBE CUTTER

000694

PLASTIC REDUCING ADAPTOR

12mm to 10mm 005469

SHUT OFF INLINE VALVE

12mm 005470

PLASTIC FEMALE X MALE THREADED ELBOW

1/2" M x 1/2" F 005369

PLASTIC ELBOW

13mm 005363
25mm 005365

PLASTIC BARBED X MALE THREADED ELBOW

13mm to 1/2" BSP male 005367
25mm to 3/4" BSP male 005368

PLASTIC JOINER



10mm **005371**
 13mm **005372**
 25mm **005374**

PLASTIC BARBED REDUCING JOINER



13mm to 10mm **005378**
 25mm to 19mm **005381**
 32mm to 25mm **005382**

PLASTIC THREADED TEE WITH MALE BRANCH



13mm x 13mm x 1/2" M BSP **005388**

PLASTIC BARBED TEE PIECE



10mm **005383**
 13mm **005384**
 25mm **005386**

PLASTIC NUT & TAIL



19mm BSP 13mm tail **005389**
 25mm BSP 13mm tail **005390**
 25mm BSP 25mm tail **005392**

PLASTIC SHUT OFF TAP



Screw down action - barbed both ends.
 13mm **005393**

PLASTIC QUICK ACTION SHUT OFF TAP



Barbed both ends
 13mm **005394**
 25mm **005395**

PLASTIC DIRECTORS



12mm BSP 10mm tail **005354**
 6mm BSP 13mm tail **005355**
 12mm BSP 13mm tail **005356**
 19mm BSP 13mm tail **005357**
 25mm BSP 25mm tail 19mm barb **005358**
 25mm BSP 25mm tail **005360**

SHURPEX POLYETHYLENE TUBING



Tough, heat and freeze resistant. Non-toxic.
 1/2"
 Blue 300ft roll **034804**
 Opaque 100ft roll **005261**
 Red 300ft roll **005263**

SHURPEX 3 WAY TEE



1/2" x 1/2" x 1/2" **005485**

SHURPEX ELBOW



1/2" x 1/2" **005489**

SHURPEX SWIVEL ELBOW



1/2" barb x 1/2" FNPT
 Straight **005493**
 Elbow **005494**

SHURPEX TUBE SADDLE



1/2" **005502**

SHURPEX ADAPTOR



1/2" barb x 1/2" MNPT **005507**

SHURPEX MANIFOLDS



3 port **005509**

SHURPEX MEMORY RING



White 1/2" **005521**

SHURPEX PLASTIC PLUG



1/2" **005527**

SHURPEX BEND SUPPORT



Reinforced plastic. 1/2" **005530**

SHURPEX MANUAL AIR EXPANDER TOOL



000618

SAMEV SRL STAINLESS STEEL SINKS

Includes plug and straight waste or optional right angle outlet, perimeter seal and fitting clips.



650mm (l) 380mm (d) 145mm (h) 006033



Top fixing
590mm (l) 370mm (d) 125mm (h) 006032

SAMEV SRL DROP IN BOWL



Stainless steel bowl, glass lid, hot & cold tap.
420mm (l) 440mm (d) 145mm (h) 006063

SAMEV SRL STAINLESS STEEL BASINS



Concealed fixing. Includes plug and waste.
145mm (h) 380mm (w) 280mm (d) 006059



Top fixing. Includes plug and waste.
125mm (h) 370mm (w) 370mm (d) 006057
Concealed fixing. Includes plug and waste.
145mm (h) 380mm (w) 380mm (d) 006058

STAINLESS STEEL SINGLE SINK BOWL ROUND



275mm diameter 110mm (d) 006050

CAMEC STAINLESS STEEL SINKS & DRAINERS



Plug and waste sold separately.
480mm x 780mm 006046



Comes with foam tape and 10 brackets. Plug and waste sold separately.
760mm x 355mm 038169

STAINLESS STEEL SINGLE BOWLS



Plug and waste not included.
280mm (l) 220mm (w) 125mm (d) 006051
355mm (l) 255mm (w) 125mm (d) 006052
305mm (l) 305mm (w) 160mm (d) 006053
300mm (l) 350mm (w) 150mm (d) 006054

STAINLESS STEEL BASINS



315mm (l) 265mm (w) 145mm (d) 038170



327mm (l) 278mm (w) 150mm (d) 038171



Full deep flange.
352mm (l) 282mm (w) 155mm (d) 038172

TWIN STAINLESS STEEL BOWL



Both bowls 305mm x 305mm 006056

PLASTIC SINK & DRAINER



White. Plug and waste not included. 711mm (l) 325mm (w) **006042**

ACRYLIC SINK BOWL



White. Includes plug and waste. 330mm (l) 279mm (w) **002110**

ACRYLIC CORNER SINK BOWL



White. Plug and waste not included. 279mm x 279mm **002111**

ACRYLIC WALL BASIN



White. Plug and waste not included. Compact. 508mm (l) 178mm (w) **002112**

PLASTIC OVAL BASIN



White. Includes plug and waste. 380mm (l) 305mm (w) 150mm (d). **002113**

MINI CORNER BASIN WITH SKIRT



Tap fittings not included.

One piece moulded white fibreglass corner basin. Ideal space saver. Easy to install. Tap holes not drilled. Uses SMEV plug and waste kit (not incl). **002116**

WASTE OUTLETS

Plastic. Suitable for 25mm hose. Plug sold separately.



Straight waste. **006072**



90° angle waste. **006073**

RUBBER SINK PLUGS



25mm **006064**
32mm **035578**

SMEVSM PLUG AND WASTE KITS

25mm plug and waste suitable for SMEV sinks only.



Straight waste. **006065**



90° angle waste. **006066**



Plug only. **006067**

TOWEL RAIL - STAINLESS STEEL



3.6m length
16mm **039112**
19mm **039113**

TOWEL RAIL BRACKETS



Chrome plated.
Centre
19mm **008196**
16mm **008200**
End pillar
19mm **008197**
16mm **008201**

TOWEL RAIL FLANGES



Chrome plated.
19mm **008198**
16mm **008202**

BATHROOM ACCESSORIES SET



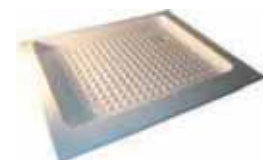
Chrome. Contains soap dish holder, toilet roll holder, towel rail, towel ring, glass tumbler and holder and a clothes peg. **002109**

SHOWER TRAY



ABS.
965mm (w) 585mm (d) 125mm (h) **002165**
1010mm (w) 683mm (d) 75mm (h) **035579**

VT90 SHOWER TRAY



White.
670mm (w) 830mm (l) 55mm (d) **002166**

SHOWER SET COMPLETE CHROME

Rail mounted shower set with hose. Handset can be raised or lowered to desired position. Chrome finish. **005859**

SHOWER SET WITH SLIDING BAR

150cm brass double lock flexible hose and soap holder. **005882**

TELEPHONE SHOWER MODEL 9100

Telephone shower head with adjustable plastic stand, soap holder Model 330 hot and cold mixer. White. **005889**

EXTERNAL RECESSED WALL TYPE SHOWER

Can be mounted on the outside of vehicle. Hatch is fade and impact resistant, UV stable and can be painted. Key lock ensures security. White. **005810**

SHURFLO RECESSED TRANSOM SHOWER SET

Trigger hot/cold shower. 170mm (w) 240mm (h) **005819**

OSCULATI SHOWER BOX

Hot/Cold mixer. Pull out/push button. Includes 4m hose. External dimensions 180mm (w) 130mm (h) **005822**

TRIGGER SHOWER WITH ROSE

Features heavy duty chrome finish and on/off trigger incorporated in handle. **005857**
Wall bracket to suit. **005872**

CAMEC SHOWER KIT

Kit comprises hand held shower rose and hose wall bracket, hot and cold mixer tap, chrome plated fittings and adjustable flow control nozzle. **005860**

SHOWER SET - ELBOW

Heavy duty chrome finish. Includes adjustable flow rate nozzle. **005869**

Wall bracket **005872**

RECESSED SHOWER HEAD AND ROSE KIT

Features a recessed shower rose and hose. Pull out handle complete with push button on/off switch. **005856**

THROUGH BULKHEAD ELBOW CONNECTOR

This fitting is used to connect hand shower sets where installation is required through wall fixing. Chrome. **005874**

HOT & COLD SHOWER MIXER

Hot/cold taps to suit hand held showers. Chrome with crystal handles. **005861**

HOT AND COLD SHOWER MIXER

Wall mounted shower mixer. White. **005824**
Knob to suit taps. **005831**

SHOWER HEAD ONLY



Full spray hand held shower head with push button water volume control. White. **005839**

HOT/COLD KITCHEN AND CARAVAN MIXING TAP



Single hole fixing with swivel spout **005925**

BREHA SPARE CARTRIDGES



To suit Hot & Cold Mixers. Part Nos. 005824, 005925 and 005913. Coarse **005829**



To suit Chrome Sets. Fine. **005828**

WALL BRACKET



Chrome bracket to suit Trigger Shower and Elbow Shower Set. **005872**

CAMEC HOT & COLD VANITY TAP SET FOLD DOWN



Chrome tap set with 90mm centre basin mixing faucet. Requires barb to take 12mm hose. **005910**

HOT & COLD BASIN MIXER MODEL MG3100



Hot and cold mixer taps with high rise 200mm swivel spout to allow easy access. Chrome. **005993**

SINGLE DECK WASHDOWN TAP



Chrome **005996**

FOLD DOWN MAINS PRESSURE SINGLE TAP



Right Hand



Left Hand

Requires barb to take 12mm hose. Chrome plated.

Right Hand **005895**

Left Hand **005904**

Knob **005899**

SINGLE FOLDING FAUCET CHROME



When folded tap body is 39mm high. Chrome finish. **005990**

SINGLE COLD BLUE CHROME



Low profile fixed pillar tap. Chrome finish. **005995**

ACCESSORY KIT



Adapts to mains pressure taps. Includes 1250mm x 12mm pressure hose, clamps, connectors, and fittings to connect to 3/4" external tap. **005909**

Brass union 1/2B x 3/8F with washer **005951**

SAMEV SRL HOT & COLD BASIN MIXER TAP



Chrome. **005983**

SHURflo 12V ROTATING FAUCET



White plastic with built in 12V switch designed for use with a water pump or pressure reducing city water entry. Folds down and is ideal for slide out camper trailer kitchens. **005958**

NOTE:

All Tapware is for low pressure RV use only

COMPACT BASIN MIXER FAUCET

Chrome lever mixer handle, 200mm swivel spout and non-drip ceramic discs. **005998**

BASIN MIXER FAUCET

Chrome lever mixer for fixed installation with low profile. Complete with lever handle, 100mm spout and non-drip discs. **006001**

COMPACT SINGLE LEVER MIXER

Features hollow handle, chrome finish with non-drip ceramic discs. For use with elbow/trigger shower sets. **006004**

MINI SINGLE LEVER MIXER

Features solid handle, chrome finish with non-drip ceramic discs. For use with elbow/trigger shower sets. **006002**

COMPACT BASIN MIXER FAUCETS

Chrome lever mixer with swivel spout and non-drip ceramic discs.
150mm swivel spout **005999**
200mm swivel spout **006000**

COMPACT SINGLE HANDLE MIXER

Chrome **006005**

BARWIG SINGLE FAUCET

White. Maximum inlet pressure 35 psi.
With switch **005953**
No switch **005954**

BARWIG ONE WAY VALVE

005798

BARWIG FIXED FAUCET

Anodised aluminium water outlet comes complete with 2 nuts for securing to sink or bench top. **005936**

PORTA POTTI PORTABLE TOILETS

Porta Potti Portable Toilets comprise 2 sections - the top section includes seat, cover, bowl, flushing bellows and fresh water storage tank. The lower section has an odour-tight detachable waste holding tank. The sections are held together by a locking latch. All models feature a high gloss finish, a built-in storage compartment for holding tank deodorant, holding tank level indicator to show when it is full and rotating pour-out spout for emptying

Porta Potti 335

Fresh Water Tank Capacity	9.8 ltr
Waste Water Tank Capacity	9.8 ltr
Average No. Flushes	27
343mm (w) 381mm (d) 304mm (h)	001842

Porta Potti 345

Fresh Water Tank Capacity	14.2 ltr
Waste Water Tank Capacity	11.2 ltr
Average No. Flushes	32
381mm (w) 412mm (d) 330mm (h)	001843

Porta Potti 365

Fresh Water Tank Capacity	14.2 ltr
Waste Water Tank Capacity	20.8 ltr
Average No. Flushes	57
381mm (w) 412mm (d) 413mm (h)	001845

FIAMMA BI-POT PORTABLE TOILETS

- Pearl colour
- Easy to carry and empty
- Slide valve, easy to dismantle
- Large discharge outlet with semi-transparent lid
- Anti-bacterial seat
- Solid and practical pump that can be completely taken apart.
- Waste tank is made from one piece eliminating the possibility of leaks and smooth surface makes cleaning easy.
- Spare parts available



Bi-Pot 30

Weight: 4.1kg
Waste Tank Cap. 11 litres
345mm (w) 35mm (d) 300mm (h)

001789

Bi-Pot 1513

Weight: 4.7kg
Waste Tank Cap. 13 litres
360mm (w) 435mm (d) 330mm (h)

001790

Bi-Pot 1520

Weight: 4.8kg
Waste Tank Cap. 20 litres
360mm (w) 435mm (d) 382mm (h)

001791

CASSETTE C-250CS CHINA BOWL TOILET



Modern and comfortable design with chinabowl. Waste holding tank with wheels and handle and 17.5L capacity. Easily serviced.
Weighs 16.3kg

038582

PORTA POTTI C-200 CASSETTE TOILET



Toilet bowl can be swivelled 180° to provide extra space. Can be fully self contained or connected into the water supply. White. 17 litre holding tank.

001879

PORTA POTTI 12V CASSETTE TOILETS C400 RANGE



New modern design with easy access to holding tank which now comes complete with wheels and a retractable handle. No flush tank. Connected to the main RV water supply. New rounded shape for easy cleaning. Parts are compatible with other Porta Potti cassette toilets. LH/RH is deemed to be from facing away from the toilet. Weighs only 8.5kg.

RH Holding Tank 001888

LH Holding Tank 001889

ELECTRA MAGIC 24V TOILET



A recirculating toilet system which is 100% self-contained and requires no pressure water connection or holding tank installation. Operated by 24V DC hook-up
503mm (l) 432mm (w) 536mm (h)

001969

BRAVURA RV TOILETS



Sized for comfort with increased seat height (428mm). Large seat and deep bowl. Improved flush. Features a pulsating flush for near instantaneous bowl washdown. Single pedal flush. White. High Profile.
454mm (h) 421mm (w) 513mm (d)

001941

Dometic

VT2500 VACUUM TOILET



Removable cassette providing an efficient and hygienic system for easy emptying. Waste is broken down through high velocity vacuum flushing action eliminating unpleasant odours. No chemicals are needed. Low energy and water consumption. Operates on 12V DC power. White china bowl, easy to clean and durable. Weight 6kg
420mm (h) 360mm (w) 440mm (d)

001934

LUGGABLE LOO TOILET



Take anywhere portable toilet with rugged lightweight plastic bucket style body with traditional snap on hinged seat and cover. Convenient carrying handle with hand contoured grip.

035589

FOLDING PORTABLE TOILET



Take anywhere, Standard height, sturdy steel frame which folds flat for storage. White seat. Spare bags included.

035588

CAMEC RV BATHROOM MODULE



Height: 1983mm
Width: 1100mm
Depth: 800mm

Parts for the Camec RV Bathroom Module should be ordered individually. Mirror, tapware and toilet are not included.

- Shower tray **002149**
- 3 x Porta spot lights **002150**
- Corner sink **002151**
- Sub sink **002152**
- Thetford panel **002153**
- Movable side **002154**
- Wall cupboard **002155**

CLASSIC BATHROOM MODULE



European design module is designed to suit the new curved C400 Cassette Toilet. All products comprising the module are sold separately. 1840mm (h) 655mm (w) 500mm (d)

- Classic cabinet constructed from white ABS plastic. Strong and durable. Easy to clean. **002120**
- Porta Potti Cassette Toilet C400 RH Holding Tank **001888**
- Porta Potti Cassette Toilet C400 LH Holding Tank **001889**
- Classic foldaway basin. Space-saving and self draining. Constructed from white ABS plastic. Strong and durable. Easy to clean. **033523**

FIAMMA JPER KEM BLUE



Concentrated double action formula, deodorises and sanitises. Suitable for fixed or portable toilets. 2 litre. **001792**

FIAMMA SUPER RINSE PINK



Scented anti-mildew bactericide for chemical toilet fresh water tanks. Cleans and protects the bowl. 1 litre **001794**

FIAMMA TOILET TISSUE



1 ply - suitable for portable toilets. Quickly disintegrates after use. Pack of 6 rolls. **035583**

AQUA KEM TOILET CHEMICAL



Green
Outstanding odour control. Assists in breaking down solids. Pleasant citrus scent. Environment friendly.

- 1 litre **001816**
- 2 litre **035585**



Blue
Works instantly to chemically neutralise odours. Pleasant pine scent with outstanding odour control. Biodegradable and septic tank safe.

- 1 litre **001813**
- 2 litre **035586**

AQUA RINSE



Fresh water tank additive ensures a smoother, better flush. Leaves a micro-thin protective film in the toilet bowl and has lubricating qualities to assist opening and closing of the blade. Pleasant lavender scent.

1 litre **001835**
2 litre **035587**

WALEX BIO-PAK EXPRESS



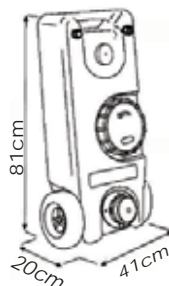
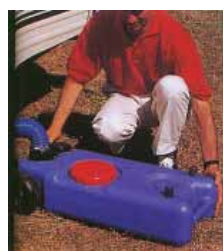
Natural enzyme deodoriser and waste digester for cassette and portable toilets.

Pre-packaged portion control - no spills. The advanced enzyme formula of Bio-Pak Express removes odours and cleans the holding tank with rapid breakdown of waste and paper.

- 100% biodegradable
- Easy to handle
- Easy to use
- Suitable for all cassette toilets, holding tanks & portable toilets
- Dissolves quickly
- Septic tank safe

039899

FIAMMA® 40 LITRE WASTE WATER TANK



3.5kg

Wheels make moving easy. Has level indicator, air release valve and 45° angle adapter for discharge. **002178**

TOILET HOLDING TANKS



Designed for boating applications and able to be pumped empty. Made of 10mm thick polyethylene. Complete with vent fitting and two 38mm hose adaptors. No slide valve.

128 litre
410mm (h) 660mm (l) 510mm (w) **002180**

170 litre
410mm (h) 940mm (l) 510mm (w) **002181**

225 litre
410mm (h) 1325mm (l) 510mm (w) **002182**

MARSAN ODOUR FILTER



Granulated charcoal filter which keeps air smelling fresh. Features quick release mounts.

16mm **002071**
25mm **002073**
38mm **002074**

BAYONET RING



Suits 90mm pipe **002014**

TERMINATION CAP WITH WIRE



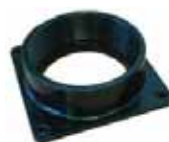
Suits bayonet ring **002015**

VALVE TERMINATION CAP & STRAP



002057

FLANGE ADAPTOR 3" FEMALE THREAD



002066

ABS SLIDE VALVE THETFORD



The side of valve with the o-ring has 90mm external diameter.

Slide valve **002022**
Repair kit **002009**

SLIDE VALVE BLACK VALTERRA



002048

EVACUATION HOSE



Premier quality hose without fittings.

3m **002083**
6m **002084**

STRAIGHT SEWER HOSE ADAPTOR



002086

FYNSPRAY HAND PUMP



Black moulded nylon body with chrome plated brass handle and swivelling spout. Suitable for fresh or salt water.

Output of 1L per 15 strokes. **005549**
Service kit **005568**

SHURflo® NAUTILUS 100 SERIES 12V PUMP 3.7L/MIN



Tough, rugged and compact. Designed to deliver 3.7L/min with minimal power consumption. Perfect for low volume, single fixture applications. Protected from thermal overload. Requires in-line switch and 3 amp fuse. 3/8" barbs.

005588

SHURflo® NAUTILUS 105 SERIES 12V PUMP 3.7L/MIN



Compact automatic demand pump. Self primes up to 750mm vertically while delivering up to 3.7L/min. Perfect for low volume, intermittent duty applications. Equipped with a thermal protector and long life pressure switch rated to 30 psi. 3/8" barbs.

005698

SHURflo® 12V COMPACT PUMP & TAP



Shurflo Nautilus Manual 12V Pump and Shurflo 12V Rotating Faucet sold as a set.

005699

SHURflo® AQUA KING AUTO PUMP



Quiet, durable and reliable. Designed and built specifically for the harsh marine environment. Sealed switches and seamless e-coated motors. 55psi 11.35L/min.

12V 034439
24v 034441

SHURflo® SMART SENSOR 5.7 PUMP



The ultimate in pump performance and reliability. Designed specifically for larger RV's and boats. Variable speed, quiet operation and multi fixture use. All models use 1/2" straight MPT quick connect fittings. 60psi 18.9L/min

12V Marine 005659
12V RV 005686
24v Marine 005694

SHURflo® CLASSIC SERIES 2088 AUTO PUMPS



Extremely reliable with high performance. Includes built in check valve rated to 200psi to prevent back flow into the tank. All models incorporate 1/2" NPSM-Ports and can run dry without damage. No fitting supplied.

12V 45psi 10.6L/min. 005669
12V 45psi
10.6L/min.(Retail pack) 005685

SHURflo® CLASSIC SERIES PUMPS FITTINGS



Nut and tail to suit 12mm hose.

90° Bent 005404
Straight 005408

SHURflo® CLASSIC SERIES STRAINER



Fits directly to the inlet of all Classic and Aqua King pumps. The transparent design allows for easy visual check while the bowl allows easy cleaning. 1/2" pipe inlet.

005672

SHURflo® EXTREME SERIES STRAINER



It is recommended that a strainer be used on the inlet side of all pumps to ensure protection from debris in the water. The Extreme Series is easy to install and even easier to clean.

005687

SHURflo® ACCUMULATOR TANK



Pre-pressurised to 25psi, cycling pulsation is reduced and pressure spikes up to 125psi increasing the life of the pump and saving battery power.

034387

SHURflo® WASHDOWN PUMP BLASTER



Rugged and self-priming. Perfect for tough washdown applications such as fish box, scaling and anchor chain cleaning. Delivers high lift, can run dry without damage and will not overheat with extended use. Supplied with spray nozzle. Retail pack. 45psi 13.2L/min

12V	034384
24v	005604

SHURflo® RAW WATER STRAINERS



It is recommended that a raw water strainer is fitted on the inlet side of all washdown and livewell pumps. A mesh screen protects pumps from harmful debris. Includes a high capacity, rugged nylon housing with clear twist off bowl.

1/2"	005791
3/4"	005793
1"	005795
1 1/4"	005796

SHURflo® IN LINE CHECK VALVE



Allows flow in one direction only to safeguard against backsurge up to 100psi. 1/2" barb on both ends. **005789**

SHURflo® HOSE ADAPTOR



Has swivel 1/2" NPT female thread that can screw straight onto the outlet side of the Blaster and Pro-Blaster Washdown pumps and a 3/4" male thread to allow hook up to hose. **034388**

SHURflo® FLOAT SWITCH



Remote or direct mounting .78mm tinner wire assembly. Ignition protected. **036789**

BREHA HAND SINK PUMPS



Self priming and simple to install. Water is supplied on both up and down strokes. Fits a sink with a 32mm mounting hole.

Standard Black	005542
Standard White	005543
Short barrel White	005546
Top plunger seal	005554
Bottom plunger seal	005555

TROJAN HAND PUMPS



Quiet easy operation. Water is supplied on both up and down strokes. Nylon body and anodised aluminium barrel. Mounting hole is 32mm dia.

White	005550
Black	005551
Gold	005552
Chrome	005553

Spare Parts

Top U seal	005558
Retaining washer	005562
Piston U seal	005559
Bottom nut assembly	005561
Washer replacement kit	005563

TROJAN MULTI PURPOSE PUMP



Suitable for most corrosive liquids found in household, agricultural and light industrial applications. **035600**

FLOJET 12V & 24v AUTO PUMP 12L/MINUTE

Delivers up to 12 ltr/minute without need for an accumulator tank. Special internal bypass feature eliminates pulsating water and pressure switch chatter. Runs dry without harm to the pump. 12V **005727**

12V with strainer 1/2" barb **005702**

24v with strainer 1/2" barb **005703**

FLOJET 12V AUTOMATIC PUMP 4.3L/MIN

Self priming. Dry running. Soft, noise absorbing mounts. Snap-in port fittings. Smooth operation without accumulator tank. Built in pulsation eliminator. Sealed motor. Weighs only 1.6kg. Delivers 4.3L/min at up to 50 psi of pressure. **005733**

FLOJET 12V TRIPLEX 2.9GPM PUMP

Self priming. Dry running. Very compact. Weighs .6kg. Complete with 3/8 barbs. Delivers 4.3L/min. **005700**

FLOJET SPARES

Quad Port 12mm hose barb elbow **005704**

Quad Port 12mm hose barb straight **005705**

Quad Port male qest elbow **005707**

Quad Port male qest straight **005711**

Diaphragm Kit **005715**

Pressure Switch Kit **005716**

LOW BOY TRIPLE ACTION PUMP

Combination hand pump, mains pressure and 12V electric pump. Low silhouette suitable for fold down campers. **005578**

Whale GP99 12V IN LINE BOOSTER PUMP

Simple, compact, low-cost and lightweight. Fits unsupported into pipework or below water tank. Ideal for up to two mixer outlets. Boosts pressure in manual or electric pump systems. Pumps fresh water, salt water and diesel. Low current draw. Length 133mm, output 12L/min. Weight 150g **005753**

Whale 12V SUBMERSIBLE PUMPS

Self venting design eliminates air locking. Designed to be dropped into a water tank. Does not require priming. Simple, compact and low cost pump. Ideal for up to two mixer outlets and suitable for dual purpose manual/electric system. Inexpensive way to update a manual to an electric system. Pumps fresh water, salt water and diesel. Very quiet.



GP8815

116.5mm (l) Output 12 IL/min, Weighs 150g

Retail pack **035605**



GP9216

Most powerful pump in the range.

160mm (l) Output 15L/min.

Weights 200g **005751**

Whale TIPTOE FOOT PUMP

Designed for neat, through-floor mounting. When not in use, the plunger locks down. Output: 7L/min. Weighs 370g **005580**
Service kit **005581**

Whale TELESCOPIC SWIVEL FAUCET

Use with foot pumps to conserve space. Swivels through 360° and can be pushed down when not in use. White. **005937**

Whale TUCKAWAY FAUCET

Great space saver. Fits into wall of the sink and folds down neatly for storage

White. With on/off switch. **005938**

White. **005939**

Whale PRESSURE SWITCH

When fitted in-line provides a convenient way to create a pressure system with an electric pump without its own switch.

Current rating - 10A, 12V-24v. Cut outpressure - within range 5-25psi **005754**

Whale NON RETURN VALVES

When fitted in line on the suction side of a pump, Whale non-return valves will ensure maintenance of prime, particularly if pump valves are weak. Suit 12.5mm ID Hose.

PVC **005785**

Brass **035607**

SHURflo WATERGUARD FILTRATION



Designed for both RV and marine applications. Reduces unpleasant tastes and odours. Provides fresh, clean drinking water. Supplied complete with all parts and fittings including carbon block disposable filter. Quick and easy to install. **036794**
Replacement cartridge **036795**

Whale AQUASOURCE WATER FILTER



An inline water filter to be fitted in the cold water pipe. Very efficient as it filters the water you drink rather than all water. When fitted as recommended the filter will remove foreign bodies and dirt particles, as well as unpleasant smells. Disposable. **026528**

FLOJET FILTERS



12mm barb. 90° quad **005706**
12mm barb-barb **005712**
12.5mm Theaded suits Quad Port **005713**
12mm Barb-Barb In line **005724**

IN LINE FILTER



1/2" hose or screw on fittings. **005403**

WATER FILTER CAMPING STYLE



This carbon activated filter will improve the colour, odour and taste of potable drinking water. It will reduce chlorine and volatile organic compounds while filtering contaminants to 10 microns. Suitable for camping, picnics or home use. **006226**

FIAMMA ACCUMULATOR TANK A20



May be used with most pump systems and may be mounted in any position. 235mm (l) 150mm (w) 100mm (h) **035603**

CAMEC FRESH WATER TANK PLASTIC 55L



960mm (l) 470mm (w) 175mm (rear depth)
185mm (front depth) **006086**
Spare tee **006088**

ALKO FRESH WATER TANK PLASTIC 52L (11.5G)



1010mm (l) 330mm (w) 175mm (d) **006089**

CAMPER VAN FRESH WATER TANK PLASTIC 57L



760mm (l) 355mm (w) 230mm (d)
No barbs. **006096**

FRESH WATER TANK ROUNDED CORNERS PLASTIC 61L (13.5G)



895mm (l) 480mm (w) 165mm (d) **006097**
Mounting Brackets **035609**

FRESH WATER TANK PLASTIC 70L



850mm (l) 520mm (w) 160mm (d)
No barbs. **006099**
Mounting Brackets **035610**

FRESH WATER TANK PLASTIC 86L (19G)



850mm (l) 520mm (w) 220mm (d) **006100**
Tandem B Secondary Front Tank **006101**
Tandem A Primary Rear Tank **006102**
Mounting Brackets **035611**

FRESH WATER TANK PLASTIC 100L (22G)



940mm (l) 620mm (w) x 180mm (d) **006104**
Tandem B Secondary Front Tank **006105**
Tandem A Primary Rear Tank **006106**
Mounting Brackets **035612**

CAMEC HEAVY DUTY FRESH WATER TANK PLASTIC 65L



Seamless construction. 9mm
870mm (l) 600mm (w) 180mm (d) **006111**

FRESH WATER TANK PLASTIC 127L (28G)



955mm (l) 790mm (w) 170mm (d)	006107
Tandem B Secondary Front Tank	006108
Tandem A Primary Rear Tank	006109
Mounting Brackets	035613

FRESH WATER TANK PLASTIC 82L



1220mm (l) 490mm (w) 190mm (d)	033423
Director 13mm Barb x 1/2" MBSP	005356
Plug 1/2" BSPT	033427
10mm Barb x 3/4" MBSP Breather	006083

FIAMMA 70 LITRE FRESH WATER TANK



Complete with all installation fittings. Water inlet pipe 38mm and air outlet 13mm. 240mm (h) 700mm (l) 470mm (d) **006110**

FRESH WATER TANK PLASTIC 59L



865mm (l) 490mm (w) 190mm (d)	033422
Director 13mm Barb x 1/2" MBSP	005356
Plug 1/2" BSPT	033427
10mm Barb x 3/4" MBSP Breather	006083

WATER INDICATOR SENDER UNIT



Easy to install in the side of the tank while the tank is in place. Designed for shallow tanks with maximum depth of 280mm and maximum wall thickness of 10mm. Includes 5m lead. 1 unit per tank required. **006115**

TANK SENDER PROBE KIT



For deeper tanks. 5 probes are mounted into the side of the tank (fresh or grey water only). Supplied with wiring kit, one junction box and 5m lead. **006116**

RV TRAVELLER LED TANK GAUGES



Simple monitoring of fresh or grey water. Incorporates its own battery power supply and no connection to vehicle's power supply is required. One kit per tank required.

1 tank	006118
2 tanks	006119
3 tanks	006120
2 gauges waste and water	006121

WATER LEVEL INDICATOR SQUARE



The square style is suitable when multiple gauges are required. The top indicator section has its own 12V battery and joining links which makes it easy to fit the gauges together. Easy to install. Black or white with grey label.

Plastic/Metal Tanks with Shallow Tank Sender

Black	7.5m lead	006126
White	5m lead	006129
Black	5m lead	006130
Black	2.5m lead	038032

Plastic Tanks Only with Deep Tank Sender

Black	7.5m lead	006128
White	7.5m lead	006127
2.5m lead		006133

WATER LEVEL INDICATOR



Accurately displays the water level in tanks. Easy installation - fits existing water tanks with no removal of water tank required. Complete with all hardware including battery and 5m lead.

Aqua/White	c/w 2.5m lead	006132
Burgundy/White	c/w 2.5m lead	035614
Aqua/White	c/w 5m lead	006134
2.5m Extension Lead		006133

JRV FRESH WATER TANK MONITOR



Single monitor panel with LED graphics. Water pump switch. 98mm (h) 117mm (w)

Black	006139
White	006141

JRV FRESH/GREY WATER OR HOLDING TANK MONITORS



Single monitor panel. Water pump switch. 98mm (h) 117mm (w) Black. **006144**

JRV FRESH WATER/HOLDING TANK MONITOR



For fresh water and holding tanks. Water pump switch. 98mm (h) 117mm (w) Black. **006147**

10mm BREATHER ELBOW



Suitable for Camec water tanks **006083**

BARBED PLUG AND OUTLET



1/2" B x 3/8" BSP

Barbed outlet

006079

Barbed plug

006080

CAMEC TANK DRAIN TAP



3/8" BSP male x 1/2" male barb

006081

TANK KLEEN



Cleans and deodorises freshwater tanks. An effective remedy for water tainting problems. Treats up to 182L. 200g.

000261

MICROPUR FLUID



For safe drinking water. 100ml bottle will treat 1000 ltr of water. Odourless, tasteless and harmless, even when used in excess of recommended level.

000262

AQUATABS PURIFYING TABS



Fast dissolving, fast acting, effervescent water purification tablets. 1 tablet/1L water. Pack of 50.

000263

WATER TANK CLEAN - FRESH TABS



To clean out fresh water tanks and systems after storage and before use.

6 tabs/card.

000264

CAMEC LOCKING WATER FILLER



White

006163

Black

006164

Spare cap & key White

006160

Spare cap & key Black

006161

LOCKING WATER FILLER WF450



Square white plastic with 14mm (d) surface mounting. Overall size 140mm x 140mm with cutout size of 100mm dia.

006165

Cap and strap

006166

WATER FILLER WITH HINGED LID



White plastic with hinged flap cap

006173

Spare flap

006174

RECESSED WATER FILLER WITH SCREW ON CAP



White

006176



LOCKING WATER FILLER



25mm reducer.

Black

006169

White

006170

MAINS PRESSURE REDUCER 4 TO 1



035619

SHURflo[®] MAINS PRESSURE REGULATOR



The diaphragm design prevents high-pressure damage often caused by city water systems. Leak tight, stress and crack resistant. Water pressure is limited to 50psi. Wall mounted.

White Bulk Pack

006154

Chrome Retail Pack

006156

SHURflo[®] IN LINE WATER ENTRY



An in-line version of the Mains Pressure Regulator. The NPT male end screws directly onto the SHURflo city water entry regulator with the other end suitable for a Gardena snap on hose fitting.

006158